

Virtual Day Trips Pebble Paperweight

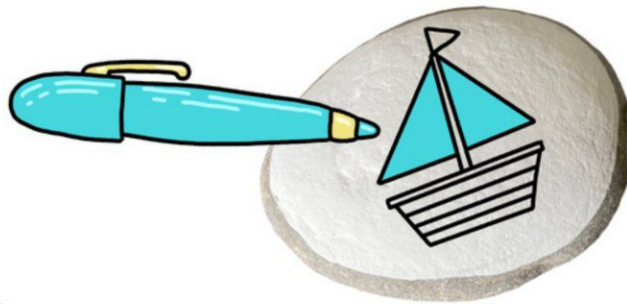
You will need:

- a pebble or large stone
- paint (pale in colour)
- paintbrush
- permanent marker pen
- Varnish or PVA glue (optional)



Step One

Paint the pebble ~ this will be the base you will use to draw on. Then leave to dry.



Step Two

Use your permanent marker pens to decorate your pebble. You might want to practice first on a piece of paper.



Step Three

Protect your artwork and varnish the surface. If you don't have varnish, use PVA* glue to seal it instead.

* PVA glue doesn't like to get wet, so keep your pebble inside.

